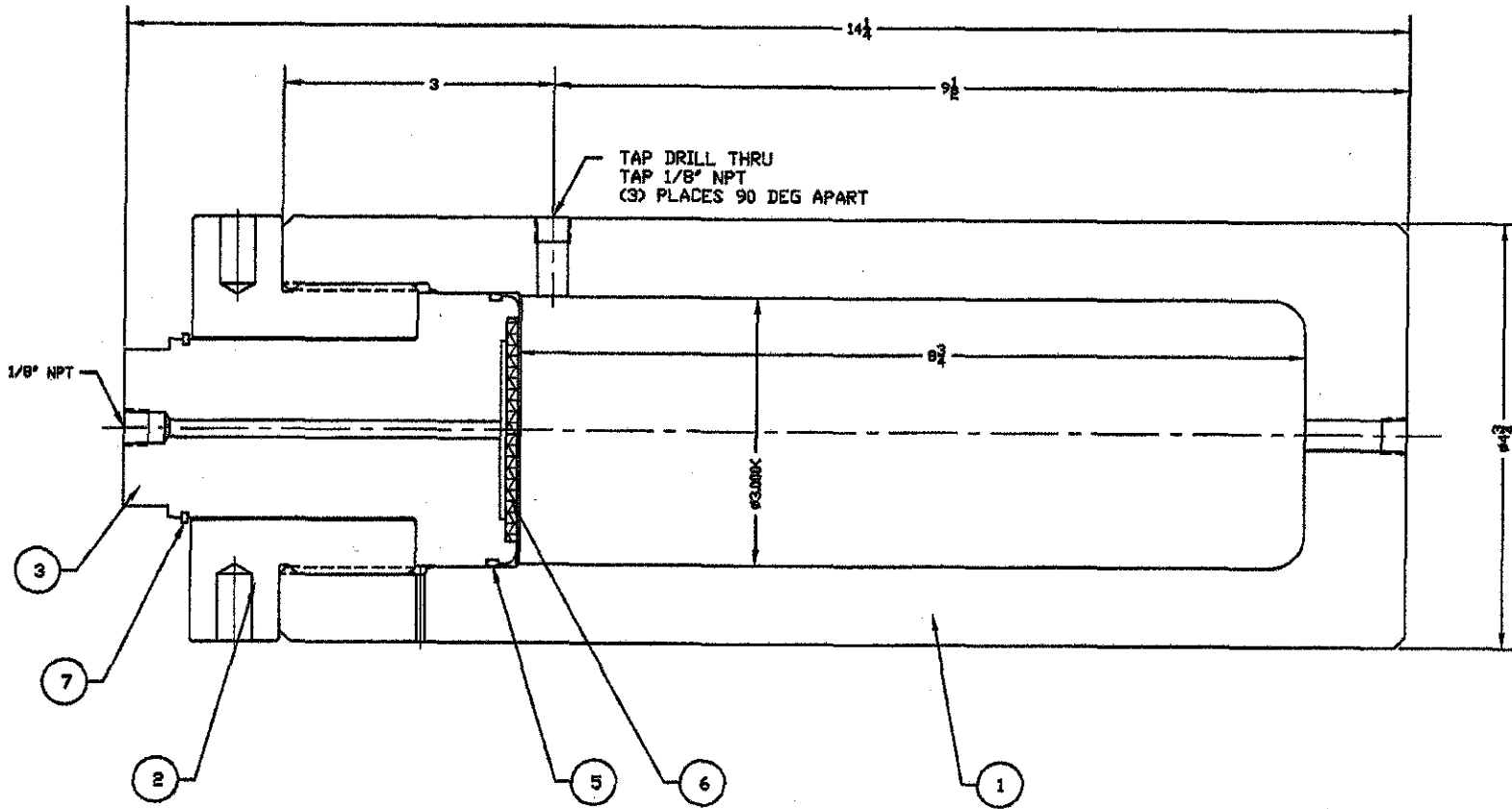


| ITEM | QTY. | PART NO.      | DESCRIPT.      | MATERIAL                                    |
|------|------|---------------|----------------|---|
| 1    | 1    | C9863-493-00  | BODY           | 17-4 PH, SA-564 Rc 35-40 MM                 |
| 2    | 1    | B19507-493-00 | NUT            | 17-4 PH, SA-564 Rc 35-40 MM                 |
| 3    | 1    | B19506-493-00 | COVER          | 17-4 PH, SA-564 Rc 35-40 MM                 |
| 4    |      |               |                |   |
| 5    | 1    | 150-G         | O-RING         | 15% GRAPHITE IMPREGNATED TFE                |
| 6    | 1    | A39266-135-03 | FILTER         | MOTT 5 MICRON DISC, 2-7/8"x.125 (316L S.S.) |
| 7    | 1    | 5100-200-H    | RETAINING RING | PH 15-7 STAINLESS STEEL (VALDES TRUARD)     |

\*\*CHEMICAL & PHYS. TEST REPORTS REQUIRED



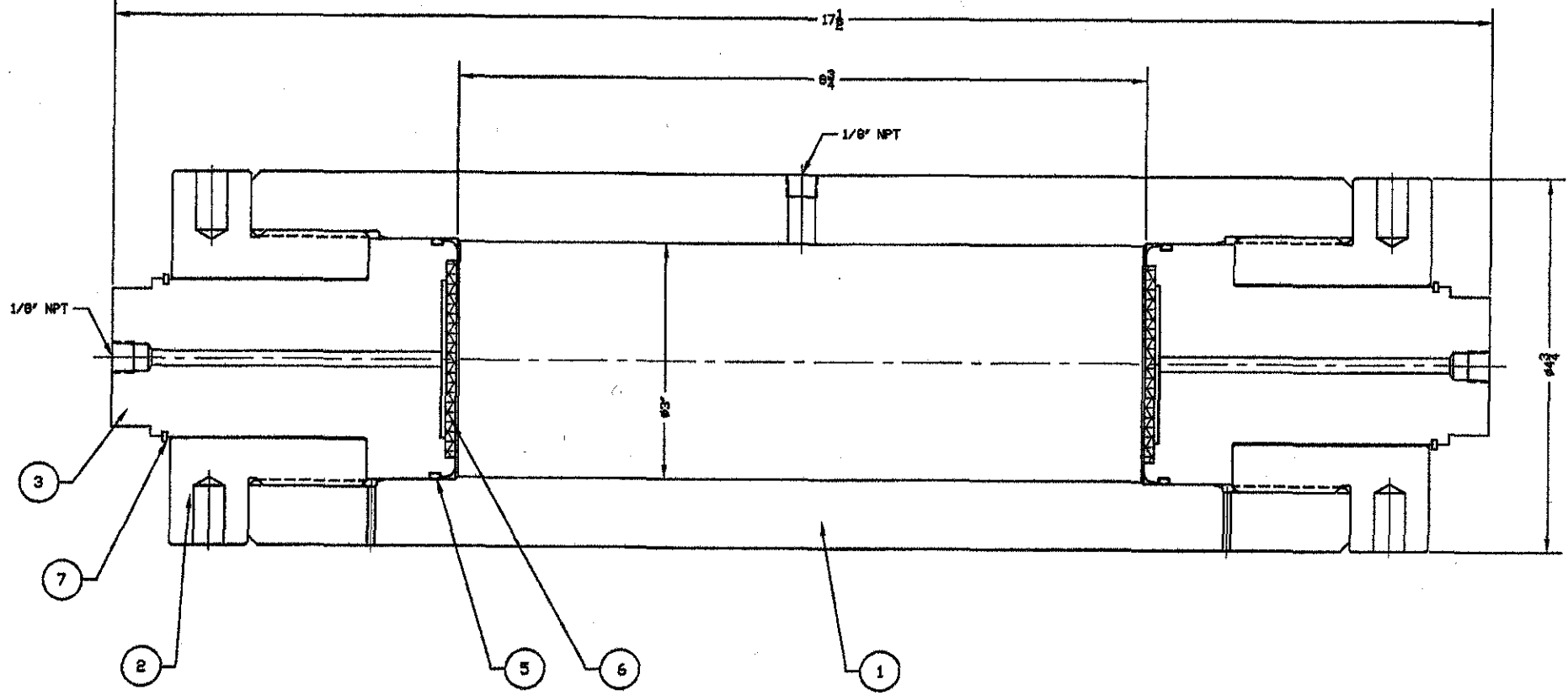
DESIGN PRESSURE 12500 PSI  
 DESIGN TEMPERATURE 250°C  
 OPERATING PRESSURE 10000 PSI  
 OPERATING TEMPERATURE 200°C  
 HYDROTEST PRESSURE 15000 PSI @ AMBIENT  
 CAPACITY 1000 ML

**NOTICE**  
 THIS DRAWING IS THE PROPERTY OF P.P.I. AND SHALL NOT BE REPRODUCED OR COPIED IN ANY WAY. THE INFORMATION CONTAINED SHALL NOT BE DIVULGED EXCEPT BY WRITTEN CONSENT.

|   |      |  |    |    |
|---|------|--|----|----|
| E.I. 10/24/77 ITEM 493 FROM CODE 494 TO 493 |      | TP   |    |    |
| 1 10/24/77 APPROV. NOTES                    |      | TP   |    |    |
| REV   | DATE | DESCRIPTION                                | BY | DA |
|   |      |  |    |    |
| LDM   |      |  |    |    |
| PDR   |      |  |    |    |
| BYPASS ALL SHARP CORNERS                    |      | TITLE 1000ml HAND-TIGHT SE VESSEL ASSEMBLY |    |    |
| YDL   |      | DATE 5/28/78                               |    |    |
| FRAC. # 2                                   |      | JOB STANDARD                               |    |    |
| CONSECUTIVITY                               |      | BY   |    |    |
| YDL   |      | SCALE NTS                                  |    |    |
| INSIDE DIMENSIONS                           |      | DATE                                       |    |    |
| REF. DWG                                    |      | SHEET 1 OF 1                               |    |    |

| ITEM | QTY. | PART NO.      | DESCR.         | MATERIAL                                     |
|------|------|---------------|----------------|--|
| 1    | 1    | C9700-493-00  | BODY           | 17-4 PH, SA-564 Rc 35-40                     |
| 2    | 2    | B15507-493-00 | NUT            | 17-4 PH, SA-564 Rc 35-40                     |
| 3    | 2    | B15506-493-00 | COVER          | 17-4 PH, SA-564 Rc 35-40                     |
| 4    |      |               |                |  |
| 5    | 2    | 150-G         | O-RING         | 15% GRAPHITE IMPREGNATED TFE                 |
| 6    | 2    | A39266-135-03 | FILTER         | MULTI 5 MICRON DISC, 2-7/8"x1.25 (316L S.S.) |
| 7    | 2    | 5100-200-H    | RETAINING RING | PH 15-7 STAINLESS STEEL (VALDES TRUARC)      |

⚠ \*\*CHEMICAL & PHYS. TEST REPORTS REQUIRED ⚠



DESIGN PRESSURE 12500 PSI  
 DESIGN TEMPERATURE 250°C  
 OPERATING PRESSURE 10000 PSI  
 OPERATING TEMPERATURE 200°C  
 HYDROTEST PRESSURE 15000 PSI @ AMBIENT  
 CAPACITY 1000 ML

| 2 5/8" DIA. CH. TYPICAL FROM CORN. 494 TO 493<br>1 1/2" DIA. ADD'D NOTED & CHANGED PART NUMBER  |         | TP          |     |      |                          |
|---|---------|-------------|-----|------|--------------------------|
| REV   | DATE    | DESCRIPTION | BY  | DA   | PC                       |
|   |         |             |     |      |                          |
| <b>LIBR</b><br>70488 62 ✓   |         |             |     |      |                          |
| <b>NOTICE</b><br>THIS DRAWING IS THE PROPERTY OF P.F.S. AND SHALL NOT BE REPRODUCED OR COPIED IN ANY WAY. THE INFORMATION CONTAINED SHALL NOT BE DISCLOSED EXCEPT BY WRITTEN CONSENT. |         |             |     |      |                          |
| 1000ML HAND-TIGHT DE VESSEL ASSEMBLY  |         |             |     |      |                          |
| DATE  | 9/26/02 | JOB         | STD | REV  | 1                        |
| BY  | 222     | ASSY.       |     |      |                          |
| CHK   |         | SCALE       | 1:1 |      |                          |
| DR  |         | PE          |     | DATE |                          |
| REP. DWG.   | X       | REP.        | END |      |                          |
|   |         |             |     |      | C-9899-2<br>SHEET 1 OF 1 |